



*SOLAREVERTICALI HAS BEEN LICENCED BY THE AUSTRALIAN MADE CAMPAIGN LIMITED TO USE AUSTRALIAN MADE LOGO ON THE SOLAREVERTICALI IN ACCORDANCE WITH THE AMAG LOGO CODE OF PRACTICE. LICENCE ID : 10378

Solare

WIRE GUIDE

 www.solaresystems.com.au  admin@solaresystems.com.au

Operational Controls

Motorization

Motorization via remote control, timer, smart phone or tablet, voice control and smart home integration is possible easily with the Solare Wire Guide.

With the ability to integrate obstacle detection features on some motors our clever design allows for the seamless* integration of your preferred motor/electronics supplier for trouble free operation.

Wind sensors should be considered on blinds exceeding 8m2.

Manual control

The easy to operate manual crank operation is suitable for smaller openings with a speedy gearbox for fast operation.

No need to bend down to operate as this clever function is done easily whilst standing.

Distributed By:

You can rest assured that your authorized distributor (above) is the very best in your area as we thoroughly scrutineer every distribution application to ensure that our high expectations are mirrored by only the very best and experienced operators who follow our stringent manufacturing, installation and quality control processes.



Overview

The Solare Wire Guide offers two designer headbox options in either fully extruded aluminium original profile or a Square Colourbond cassette. Designed for areas where side channels cannot be installed or minimum visual impact is the brief the discrete tensioned stainless wire runs vertically down the outer edge of the blind to guide the bottom rail to its resting point.

The Solare Wire Guide has been cleverly designed so the resting point of the bottom rail is on the Stainless-steel post at the bottom of the Wire. This eliminates common wire stretch and in turn gets the bottom rail lower to the ground. The wire guide bush in the bottom rail fits neatly in the top of the extrusion enabling the bottom rail to sit lower than any other Wire guide on the market.

To enhance the strength of this unit the designers have incorporated a class leading 85mm top roller tube* to combat wide spans and hold the fabric even flatter. Couple these innovative design features with a bottom rail that has the capacity to hold a large amount of weight and all of a sudden, the wire guide has become a reliable and aesthetically pleasing product which you can turn your back to once installed and have confidence that you have just installed the absolute best there is available in Australia!

Colour Range

With all mill extrusions almost any colour is possible with 100's of colors and textured finishes available using a durable polyester thermosetting powder coat range.

With ample matt, subtle and neutral colour tones, Colorbond® steel standard colour ranges, or the ever popular textured finishes we are confident of the perfect colour choice for your project.

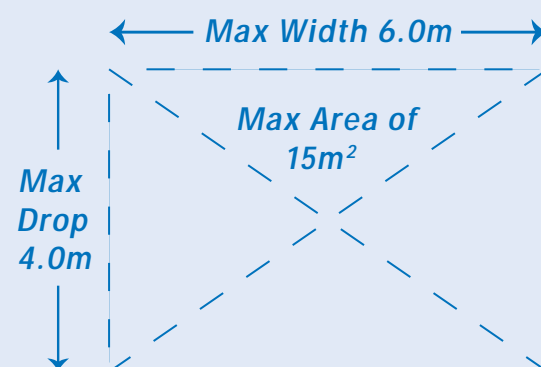
Fabric Options

For best performance we recommend the use of a high quality poly cotton mesh in either a 2 x 2 basket weave or a fiberglass twill weave for best results.

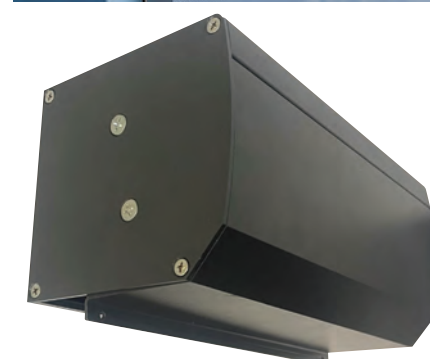
Dimensionally stable clear PVC can also be used*

Sizing

Maximum Width: **6.0m**
Maximum Drop: **4.0m**
Maximum Sq Metre: **15m²**



* Conditions apply



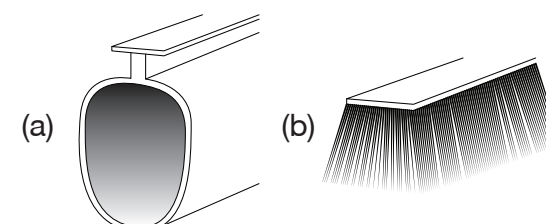
Extruded Aluminium original headbox

Bottom Rail

Our intensely weighted bottom rail ensures superior tension is applied to the fabric at all times.

Bottom rail seals – We have 2 options for sealing of the bottom rail which protects the bottom rail when down helping minimize gaps and reduces the likelihood of debris and insect penetration.

- (a) Large rubber round seal (for out of level areas).
- (b) Small Brush pile seal. (Ultimate protection on delicate surfaces)



Solare
BASIK



The Solare Basic is a simple straight drop blind which has integrated strap runners into the bottom rail. This Basic blind can have either headbox and is easily strapped to a handrail or similar.

Features

- Versatility
- Environmentally friendly
- Uses recyclable components.
- Custom built for every application
- Thermally efficient
- Australian designed
- Australian owned
- Australian made
- Employing local people